

3 LAN configuration

The code template is com1800template 004. It can be downloaded from <https://comblock.com/download/com1800template%20004.7z>

It implements 3 Gigabit Ethernet LANs with up to two TCP servers each.

The IP addresses are

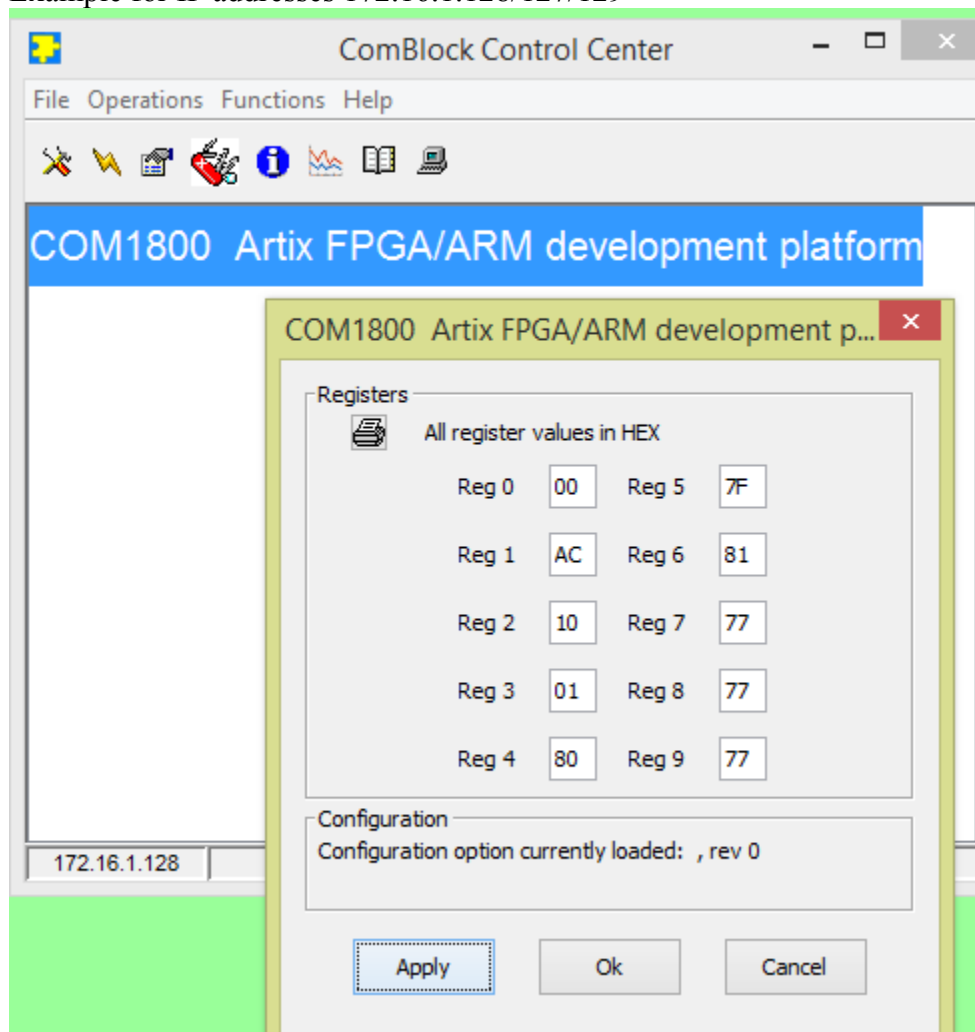
LAN1: REG(1).REG(2).REG(3).REG(4)

LAN2: REG(1).REG(2).REG(3).REG(5)

LAN3: REG(1).REG(2).REG(3).REG(6)

where REG(i) is the control register i. These registers can be set using the graphical user interface (ComBlock Control Center)

Example for IP addresses 172.16.1.128/127/129



LAN1 is the RJ-45 connector on the top side of the COM-1800

LAN2 is the first RJ-45 connector on the COM-5401

LAN3 is the third RJ-45 connector on the COM-5401

(RJ-45 connectors 2 and 4 on the COM-5401 cannot be used for lack of interface signals)

Change notice for a 3-LAN configuration:

1. The three COM-1800 boards in this shipment have been modified to avoid a signal conflict on pin LEFT_CONNECTOR_B13:

R73 (bottom side) is removed

2. The component PHY_CONFIG_KSZ9021.vhd was modified as follows:

```
constant RGMII_INBAND_STATUS_EN: std_logic := '0';
```